



PRODUCT PROFILE



SAP NO. 2900000592

Apr/2014-15/L1/1000



India : Toll Free No. 1800 103 5555
Other Countries : +91-7292 410500

SHAKTI PUMPS (I) LTD.

Regd. Office & Works : Plot No.401, Sector - 3, Pithampur - 454774, Dist.- Dhar (M.P.) - INDIA
Fax: +91-7292-407044
E-mail : info@shaktipumps.com, sales@shaktipumps.com, Visit us at : www.shaktipumps.com

PRODUCT INCLUDED

- Submersible Pumps & Motors • Monoblock Pumps
- Openwell Pumps • Pressure Booster Pumps

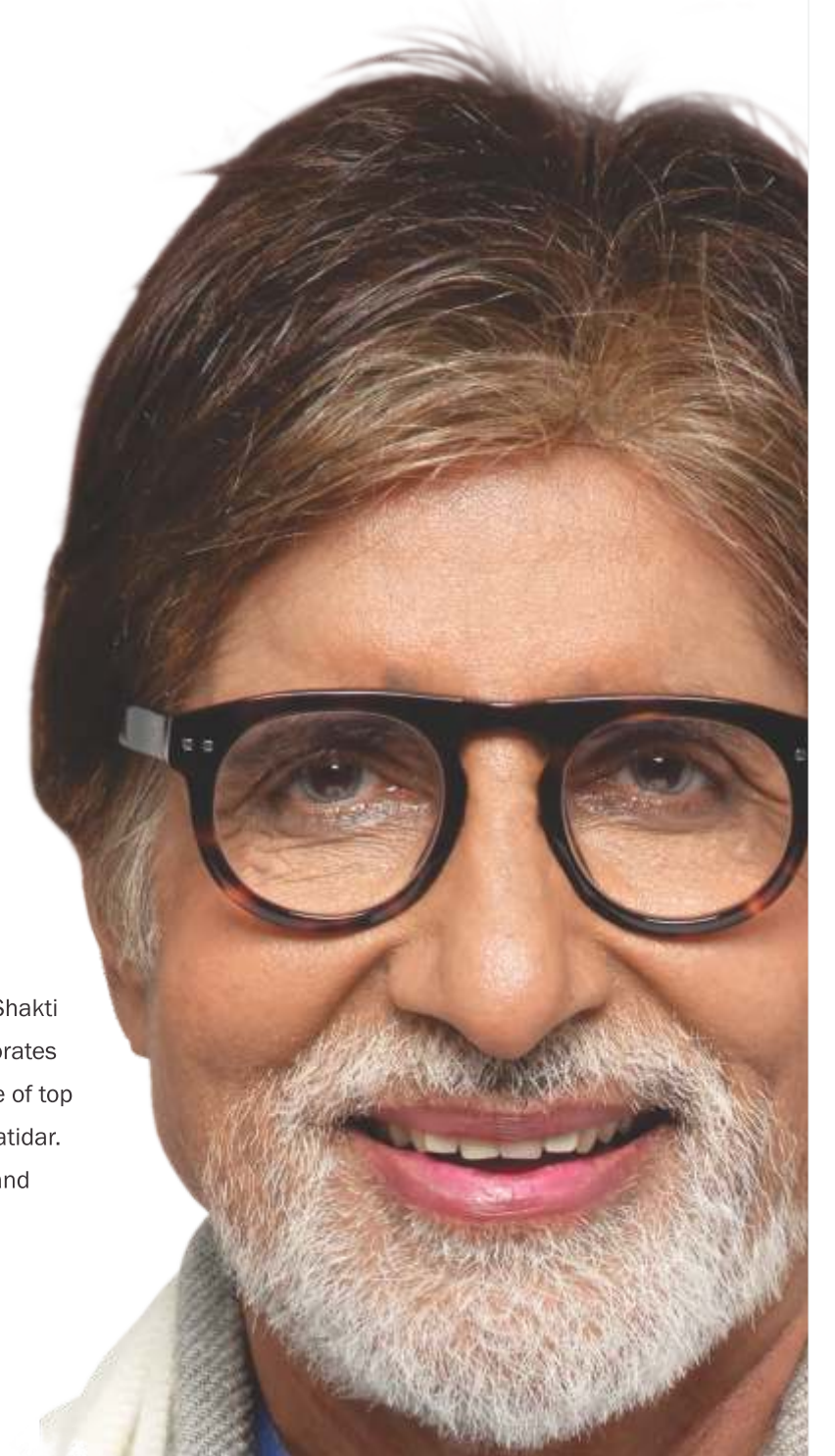


www.shaktipumps.com

Amitabh Bachchan is undoubtedly the greatest and most influential actor in the history of Indian cinema. With a career spanning more than 4 decades and over 180 feature films, his popularity goes beyond geographical boundaries. He is indeed, one of the most well-known Indian personalities in the world. We are proud to have him as the face of our brand not only for his popularity across all age-groups but also for the values that he portrays. He is an inspiration to millions of Indians, ruling the hearts with his energy, humility and grace.

It gives me immense pleasure to be associated with Shakti Pumps. It is great to know that Shakti Pumps incorporates cutting edge technology to manufacture a wide range of top quality pumps. Accolades to all of you and Shri Dinesh Patidar. May you all keep progressing under his able leadership and touch the pinnacle of success.

Amitabh Bachchan



SHAKTI
PUMPING LIFE

Shakti means 'POWER' and at Shakti Pumps this power corresponds to the power to perform, the power to persist and the power to save and all of the Shakti products exhibit this power through their performance.

Established in 1982, Shakti Pumps is the pioneer in producing stainless steel pumps in India. We became a Limited Company in the year 1995 & today with more than 1200 employees, Shakti Pumps manufactures international standard pumps for a wide usage spectrum; be it domestic, agricultural, industrial, waste water or temperature control. Manufactured in a state-of-the-art facility using the best quality raw materials and the latest technology, each and every Shakti Pump is a result of our relentless research and our product policy of making the most efficient, high performance and energy saving pumps.

We strive to become one of the leading global players in the stainless steel pumps arena and have a remarkable presence in over 100 countries.

SEZ UNIT, Pithampur



VISION

To become a company that constantly strives for quality and customer satisfaction by providing best pumping solutions with global benchmarks. To excel with an emphasis on best business and ethical practices with strong organizational values justifying the interests of all stakeholders.

MISSION

To work relentlessly towards coming closer to our vision statement by offering best working environment and training so as to focus on integrity and ethics. To empower the workforce to offer products and services that exceed customer expectations by providing value for money and ensuring handsome returns to our employees and shareholders thereby contributing to our mission to cross \$1 billion mark by 2021.

QUALITY POLICY

Shakti Pumps (I) Ltd. is committed to achieve total customer satisfaction by manufacturing high quality pumps with global benchmark meeting customer expectations by providing timely supply and services to our customers. We shall strive to maintain a high degree of goodwill and brand image to emerge as a market leader in domestic and international markets. We shall strive for providing excellent services to our customers by teamwork and continual improvement of Quality Management Systems thereby achieving total customer delight.

UNIT III



PUMP & MOTOR PLANT



UNIT III



BOOSTER & END SUCTION PLANT



STAINLESS STEEL SUBMERSIBLE PUMPS



4" Submersible Pumps (QF 1.5 – QF 25)

Applications

!Irrigation, Domestic water supply
!Fountains, Industrial water supply
!Pressure boosting units, Ponds
!Gardens, Sprinkler Systems and Mining

Features

!High operating efficiency
!Highly durable & hygienic
!Good resistance to sand
!Can be easily dismantled and repaired
!Can handle upthrust load

4"/100 MM Well Size

50Hz

Model No.	QF2	QF5	QF6	QF12	QF20	QF25
Flow (M ³ /h)	2	3	5	8	9	14
Max. Head (m)	530	365	510	620	180	165
Outlet Size (inches)	1	1	1 ½	2	2	2
	1 ¼	1 ¼				

60Hz

Model No.	QF2	QF5	QF6	QF12	QF20	QF25
Flow (M ³ /h)	2	3	5	8	9	14
Max. Head (m)	500	650	450	540	170	150
Outlet Size (inches)	1	1	1 ½	2	2	2
	1 ¼	1 ¼				

60Hz NORTH AMERICA

Model No.	QF1.5	QF2	QF5	QF6	QF12	QF20	QF25
Flow (GPM)	7	10	16	25	40	60	75
Max. Head (ft)	830	1575	1980	1275	1580	510	460
Outlet Size (inch)	1	1	1 ¼	1 ½	2	2	2
	1 ¼	1 ¼					

6" Submersible Pumps (QF 10 – QF 100)

Applications

!Irrigation, Domestic water supply
!Fountains, Industrial water supply
!Pressure boosting units, Ponds
!Gardens, Sprinkler Systems and Mining

Features

!High operating efficiency
!Highly durable & hygienic
!Good resistance to sand
!Can be easily dismantled and repaired
!Can handle upthrust load

6"/150 MM Well Size

50Hz

Model No.	QF10	QF15	QF30	QF50	QF75	QF100
Flow (M ³ /h)	10	12	17	30	46	60
Max. Head (m)	450	450	660	620	500	420
Outlet Size (inches)	2 ½	2 ½	2 ½	3	3	3
			3	4	4	4

60Hz

Model No.	QF10	QF15	QF30	QF50	QF75	QF100
Flow (M ³ /h)	10	12	17	30	46	60
Max. Head (m)	680	670	800	650	460	435
Outlet Size (inches)	2 ½	2 ½	2 ½	3	3	3
			3	4	4	4

60Hz NORTH AMERICA

Model No.	QF30	QF50	QF75	QF100
Flow (GPM)	85	150	230	300
Max. Head (ft)	2080	2040	1390	1220
Outlet Size (inch)	2 ½	3	3	3
	3	4	4	4

8" Submersible Pumps (QF 125 – QF 160)

Applications

!Irrigation, Domestic water supply
!Fountains, Industrial water supply
!Pressure boosting units, Ponds
!Gardens, Sprinkler Systems and Mining

Features

!High operating efficiency
!Highly durable & hygienic
!Good resistance to sand
!Can be easily dismantled and repaired
!Can handle upthrust load

8"/200 MM Well Size

50Hz

Model No.	QF125	QF160
Flow (M ³ /h)	77	95
Max. Head (m)	440	420
Outlet Size (inches)	5	5

60Hz

Model No.	QF125	QF160
Flow (M ³ /h)	77	95
Max. Head (m)	435	400
Outlet Size (inches)	5	5

60Hz NORTH AMERICA

Model No.	QF125	QF160
Flow (GPM)	385	475
Max. Head (ft)	1240	1280
Outlet Size (inch)	5	5

10" Submersible Pumps (QF 210 – QF 270)

Applications

!Irrigation, Domestic water supply
!Fountains, Industrial water supply
!Pressure boosting units, Ponds
!Gardens, Sprinkler Systems and Mining

Features

!High operating efficiency
!Highly durable & hygienic
!Good resistance to sand
!Can be easily dismantled and repaired
!Can handle upthrust load

10"/250 MM Well Size

50Hz

Model No.	QF210	QF270
Flow (M ³ /h)	125	160
Max. Head (m)	500	480
Outlet Size (inch)	6	6

60Hz

Model No.	QF210	QF270
Flow (M ³ /h)	125	160
Max. Head (m)	470	420
Outlet Size (inch)	6	6

60Hz NORTH AMERICA

Model No.	QF210	QF270
Flow (GPM)	625	800
Max. Head (ft)	990	780
Outlet Size (inch)	6	6

12" Submersible Pumps (QF 360)

Applications

!Irrigation, Domestic water supply
!Fountains, Industrial water supply
!Pressure boosting units, Ponds
!Gardens, Sprinkler Systems and Mining

Features

!High operating efficiency
!Highly durable & hygienic
!Good resistance to sand
!Can be easily dismantled and repaired
!Can handle upthrust load

12"/300 MM Well Size

50Hz

Model No.	QF360
Flow (M ³ /h)	215
Max. Head (m)	430
Outlet Size (inches)	6

60Hz

Model No.	QF360
Flow (M ³ /h)	215
Max. Head (m)	340
Outlet Size (inches)	6

60Hz NORTH AMERICA

Model No.	QF360
Flow (GPM)	1100
Max. Head (m)	1120
Outlet Size (inches)	6

14" Submersible Pumps (SSP 270 – SSP 360)

Applications

!Irrigation, Domestic water supply
!Fountains, Industrial water supply
!Pressure boosting units, Ponds
!Gardens, Sprinkler Systems and Mining

Features

!High operating efficiency
!Highly durable & hygienic
!Good resistance to sand
!Can be easily dismantled and repaired
!Can handle upthrust load

Operating Condition

!Flow Rate, Q ~27 -450 m³/h
!Head, H ~Max. 425 meter

Material

!Diffuser –Cast Iron
!Impeller -Bronze

14"/360 MM Well Size

50Hz

Model No.	SSP 270	SSP 300	SSP 360
Max. Head (m)	405	335	285
Outlet Size (inches)	DIN 175	DIN 175	DIN 175

SUBMERSIBLE MOTORS



4" Premium Series (Encapsulated Motors)

Applications

These submersible motors are suitable to couple with deepwell submersible pump ends. They are used for Irrigation, Domestic water supply, Fountains, Industrial water supply, Pressure boosting units, Ponds, Gardens, Sprinkler Systems and Mining.

Features

- ! High operating efficiency and lesser power Consumption
- ! Shaft made of Stainless Steel (Special Grade)
- ! Industry Standard NEMA mounting dimensions
- ! Sand Slinger Protection

Specifications

Nominal Dia. : 4"

Power range (kW)	: 0.37kW-3.7kW/0.5hp-5hp (Single Phase) : 0.37kw-7.5kw/ 0.5hp-10hp (Three Phase)
Speed	: 2850 rpm, 50 Hz & 3450 rpm, 60 Hz
Versions	: 230V, 50 Hz & 60 Hz (Single Phase) : 380/400/415V, 50 Hz (Three Phase) : 230/380/460V, 60 Hz (Three Phase) : Direct On Line (DOL)
Thrust Rating	: 1500-6500 N
Type of Duty	: S1 (Continuous)
Degree of Protection	: IP 58
Class of Insulation	: F
Maximum Liquid Temperature	: 30°C/86°F



4" MCIP Series (Water Filled Rewindable Motors)

Applications

These submersible motors are suitable to couple with deepwell submersible pump ends. They are used for Irrigation, Domestic water supply, Fountains, Industrial water supply, Pressure boosting units, Ponds, Gardens, Sprinkler Systems and Mining.

Features

- ! High operating efficiency and lesser power Consumption
- ! Shaft made of Stainless Steel (Special Grade)
- ! Can be easily dismantled and repaired
- ! Industry Standard NEMA mounting dimensions
- ! Sand Slinger Protection

Specifications

Nominal Dia. : 4"

Power range (kW)	: 0.37 kW - 3.7 kW/ 0.5hp - 5hp (Single Phase) : 0.37 kW - 5.5 kW/ 0.5hp - 7.5hp (Three Phase)
Speed	: 2850 rpm, 50 Hz & 3450 rpm, 60 Hz
Versions	: 230V, 50 Hz & 60 Hz (Single Phase) : 380/400/415V, 50 Hz (Three Phase) : 230/380/460V, 60 Hz (Three Phase) : Direct On Line (DOL)
Thrust Rating	: 1500-6500 N
Type of Duty	: S1 (Continuous)
Degree of Protection	: IP 58
Maximum Liquid Temperature	: 30°C/86°F



6" SML-CI Series (Water Filled Rewindable Motors)

Applications

These submersible motors are suitable to couple with deepwell submersible pump ends. They are used for Irrigation, Domestic water supply, Fountains, industrial water supply, Pressure boosting units, Ponds, Gardens, Sprinkler Systems and Mining.

Features

- ! Water cooled rewindable motor
- ! Can be easily dismantled and repaired
- ! High operating efficiency
- ! Industry Standard NEMA mounting dimensions

Specifications

Nominal Dia. : 6"

Power range (kW)	: 4 kW - 18.5 kW/5.5hp-25hp
Speed	: 2850 rpm, 50Hz 3450 rpm, 60Hz
Versions	: 380/400/415V, 50 Hz
Thrust Rating	: 15500 N
Type of Duty	: S1 (Continuous)
Degree of Protection	: IP 68
Maximum Liquid Temperature	: 30°C/86°F



6" MTSF-CI & SS304 Series (Water Filled Rewindable Motors)

Applications

These submersible motors are suitable to couple with deepwell submersible pump ends. They are used for Irrigation, Domestic water supply, Fountains, Industrial water supply, Pressure boosting units, Ponds, Gardens, Sprinkler Systems and Mining.

Features

- ! Water cooled rewindable motor
- ! Can be easily dismantled and repaired
- ! High operating efficiency
- ! Industry Standard NEMA mounting dimensions with Studs (M 12)
- ! Cable Material according to drinking water regulations
- ! Sand Slinger and shaft seal for high performance in sand
- ! Design for retrofittable PT 100 Sensor
- ! Mech. Seal : Sic vs Sic

Specifications

Nominal Dia. : 6"

Power range (kW)	: 4kW-37kW/5.5hp-50hp
Speed	: 2850 rpm, 50Hz & 3450 rpm, 60Hz
Versions	: 380/400/415V, 50 Hz (Three Phase) : 230/380/460V, 60 Hz (Three Phase)
Thrust Rating	: 15500 N - 27500 N
Type of Duty	: S1 (Continuous)
Degree of Protection	: IP 68
Maximum Liquid Temperature	: 30°C/86°F
Optional :	
	! Motor in Complete 316
	! PE2/PA winding insulation for max. ambient temp. of 50°C at the same cooling conditions as standard



8" MTSF 200 Series (Water Filled Rewindable Motors)

Applications

These submersible motors are suitable to couple with deepwell submersible pump ends. They are used for Irrigation, Domestic water supply, Fountains, Industrial water supply, Pressure boosting units, Ponds, Gardens, Sprinkler Systems and Mining.

Features

- ! Water cooled rewindable motor
- ! Can be easily dismantled and repaired
- ! High operating efficiency
- ! Industry standard NEMA mounting dimensions
- ! Cable material according to drinking water regulations
- ! SIC shaft seal for maximum sand protection
- ! Optional PT 100 Sensor
- ! Easy to mount with double flange
- ! Mech. Seal : Sic vs Sic

Specifications

Nominal Dia. : 8"

Power range (kW)	: 22 kW - 93 kW/30hp-125hp
Speed	: 2850 rpm, 50 Hz & 3450 rpm, 60 Hz
Versions	: 380/400/415V, 50 Hz (Three Phase) : 230/380/460V, 60 Hz (Three Phase)
Thrust Rating	: 45000 N
Type of Duty	: S1 (Continuous)
Degree of Protection	: IP 68
Maximum Liquid Temperature	: 30°C/86°F
Optional :	
	! Motor in Complete 316
	! PE2/PA winding insulation for max. ambient temp. of 50°C at the same cooling conditions as standard



10" MTSF 250 Series (Water Filled Rewindable Motors)

Applications

These Submersible motors are suitable to couple with deepwell submersible pump ends, used for Irrigation, Domestic water supply, Fountains, Industrial water supply, Pressure boosting units, Ponds, Gardens, Sprinkler Systems and Mining.

Features

- ! Water Cooled Rewindable motor
- ! Easy to mount with double flange
- ! Can be easily dismantled and repaired
- ! High operating efficiency
- ! Cable material according to drinking water regulations
- ! Sand slinger and SIC shaft seal for maximum sand protection
- ! Optional PT 100 Sensor
- ! Non-contaminating FES 93 filling
- ! Mech. Seal : Sic vs Sic

Specifications

Nominal Dia. : 10"

Power range (kW)	: 85 kW - 185kW/ (116hp 252hp)
Speed	: 2850 rpm, 50Hz & 3450 rpm, 60Hz
Versions	: 380/400/415V, 50 Hz (Three Phase) : 230/380/460V, 60 Hz (Three Phase)
Thrust Rating	: 60000 N
Type of Duty	: S1 (Continuous)
Degree of Protection	: IP 68
Maximum Liquid Temperature	: 30°C/86°F
Optional :	
	! Motor in Complete 316
	! PE2/PA winding insulation for max. ambient temp. of 45°C at the same cooling conditions as standard

SH, SHI, SHN SERIES



Domestic Water Pressure Boosting Pumps

Applications

- ! Suitable for liquid transfer
- ! Small industrial water supply systems
- ! Pressure boosting systems
- ! Domestic water supply systems
- ! Cooling systems
- ! Air-conditioning systems
- ! Horticultural irrigation systems

Features

- ! Compact design
- ! Robust design
- ! Low noise
- ! Full stainless steel design (SHI & SHN only)
- ! Booster sets for domestic water supply
- ! Automatic start/stop when equipped with Press control

Specifications:

Power range (kW) : 0.37kw-2.2kw/ 0.5hp-3.0 hp

Head Range : 18-60 Mtrs/ 59-196 ft

Flow Range : 0.8-14M³/Hr/ 3.5-61.5 gpm

Type of Duty : S1 (Continuous)

Degree of Protection : IP

Liquid temp. : 0 °C to + 90 °C/32 °F-194 °F

Operating Pressure : Max. 10 bar/145 PSI

SH, SHI, SHN SERIES

Model No.	2	4	8	12
Flow (M ³ /hr)	3.2	7.5	8.5	14
Flow (gpm)	14	33	37	61
Max Head	58	56	57	60
Max Head 60Hz	80	52	53	58

SCM SERIES



Pressure Booster Pumps

Applications

- Washing systems
- Cooling and air conditioning systems
- Water supply systems
- Water treatment systems
- Fire fighting systems
- Industrial plants
- Boiler feed systems
- Pressure boosting
- Domestic water supply
- Horticultural irrigation

Feature

- Compact design.
- Worldwide usage.
- High reliability.
- Service-friendly.
- Wide performance range.
- Low noise.
- Full stainless steel design.
- Booster sets for domestic water supply.
- Automatic start / stop when equipped with press control.

Performance

Head,H : Max.130m

Discharge : Max 467 lpm

Flow,Q : 28 m³/ hr

Rating : 0.5 H.P. to 10 H.P.

SCM SERIES

Flow (m ³ /h)	28
Flow (gpm)	Max 123.4
Head (meter)	Max 130
Rating	0.5 to 10 HP

SJP SERIES



Domestic Water Pressure Booster Pumps

Applications

- ! Wide variety of water supply and transfer duties in Homes
- ! Used for Agriculture and Horticulture
- ! Used for small scale service Industries
- ! Gardening and Hobby activities

Features

- ! Self-Priming Pump
- ! Stable operation even in case of air pockets in the liquid
- ! Built-in ejector, fitted with an ejector valve or a plug having two different setting possibilities (open & close) for maximum discharge, maximum efficiency, etc.
- ! Easy installation
- ! Dynamically balanced rotating parts to ensure minimum vibration during running
- ! Replaceable wearing parts and hence longer life
- ! Easy maintenance and spares availability
- ! Automatic start/stop when equipped with Press control
- ! Booster sets for small-scale water supply
- ! Low noise level

SJP SERIES

Model No.	POS1
Flow (M ³ /h)	3.78
Flow (GPM)	16.6
Head	40m

Position (1) if the value is completely open.

Model No.	POS2
Flow (M ³ /h)	4.6
Flow (GPM)	20.3
Head	25m

Position (2) if the value is completely open.

SNK SERIES



End-Suction Long Coupled Pumps

Applications

- ! The end-suction pumps are especially suitable for water distribution in large scale irrigation systems
- ! Industrial pressure boosting
- ! Industrial liquid transfer
- ! HVAC
- ! Irrigation

Features

- ! The pumps have back pull design enabling the removal of the motor without dismantling the pump
- ! Motors are eff class – 1
- ! The pumps can be driven by diesel set or DG set

Performance

Head : 56m/ 183ft

Discharge : 2100 lpm/ 554gpm

Ratings : 0.75hp to 20.0hp

SNB SERIES



End-Suction Close Coupled Pumps

Applications

- ! The end-suction pumps are especially suitable for water distribution in large scale irrigation systems
- ! Industrial pressure boosting
- ! Industrial liquid transfer
- ! HVAC
- ! Irrigation

Features

- ! The pumps have back pull design enabling the removal of the motor without dismantling the pump
- ! Motors are eff class – 2

Performance

Head : 56m/183ft

Discharge : 2100 lpm /554gpm

Ratings : .75hp to 20.0hp

SSNB SERIES



End-Suction Close Coupled Pumps

Applications

- ! Water distribution.
- ! Pressure boosting.
- ! Liquid transfer.
- ! Irrigation.
- ! Domestic water supply.

Features

- ! Ultra modern & latest design.
- ! All units are thoroughly tested for field
- ! Superior design materials & manufacturing process assure a longer life
- ! The components are made of selective materials.
- ! Motors are class – 2

Performance

Head,H : Max 24m

Discharge : Max 500 lpm

Flow,Q : 30 m³/ hr

Rating : 1.0 H.P. to 3.0 H.P.

SHOS M SERIES



Open-Well Pumps

Applications

- ! Rural and urban draining water installations
- ! Water supplies for high-rise buildings
- ! Water circulating system for lawns & gardens
- ! Agricultural lift sprinkler and drip irrigation
- ! Industrial service water supply schemes
- ! Decorative water fountains

Features

- ! Most modern and latest in design
- ! All the units are thoroughly tested for field
- ! Superior design materials & manufacturing processes assure a longer life
- ! Easy installation
- ! High efficiencies better than international values leading to energy saving
- ! Silent vibration free running
- ! The components are made of selective materials
- ! Effective after sales service
- ! Suitable for 160/240V in 1 ph
- ! Manufactured by ISO 9001-2000 Company

Performance

Head	: 56m/ 183 ft
Discharge	: 2100 lpm/ 554gpm
Rating	: 0.75 hp to 20.0 hp

SOMB SERIES



Open-Well Pumps

Applications

- ! Rural and urban draining water installations
- ! Water supplies for high-rise buildings
- ! Water circulating system for lawns & gardens
- ! Agricultural lift sprinkler and drip irrigation
- ! Industrial service water supply schemes
- ! Decorative water fountains

Features

- ! Ultra modern & latest design.
- ! All units are thoroughly tested for field
- ! Superior design materials & manufacturing process assure a longer life
- ! The components are made of selective materials.
- ! Easy installation
- ! High efficiency, better than international values, leading to energy saving.
- ! Silent, vibration free running.
- ! Effective after sales service.
- ! Manufactured by an ISO 9001-2008 company

Performance

Head,H	:	Max.34m
Discharge	:	Max 500 lpm
Flow,Q	:	30 m ³ / hr
Rating	:	1 H.P. to 3 H.P.

CRP SERIES



Self-Priming Pumps

Applications

- ! Domestic water supply
- ! Overhead tanks
- ! Home pressure boosting
- ! Construction site
- ! Gardens/Fountains

Features

- ! High quality die cast aluminum motor body
- ! Anti-corrosive coated cast iron parts
- ! Built-in winding protector
- ! Insulation class "B"
- ! SS Shaft
- ! Bronze Impeller
- ! Duty Cycle S1
- ! Double sealed ball bearings

CRP SERIES		
Model No.	CRP-05	CRP-10
Flow (M ³ /hr)	3	3
Flow (gpm)	11	15
Flow (lpm)	42	58
Max Head (M)	36	60

SMTR SERIES



Immersible Pump Series

Applications

- ! Suitable for pumping cooling lubricants for EDM machine tools
- ! Grinding machines
- ! Machining centers
- ! Cooling units
- ! Industrial washing machines
- ! Filtering systems
- ! Lathes
- ! Chip conveyors
- ! Condensate

Features

- ! Flexible installation length
- ! Wide range
- ! Reliable
- ! Service friendly
- ! Simple installation

Performance

Head,H	:	Max.250m
Discharge	:	Max 1067 lpm
Flow,Q	:	64 m ³ / hr
Rating	:	0.5 H.P. to 40 H.P.

SCR, SCRI, SCRN SERIES



Vertical Multistage Centrifugal Pumps

Applications

The pumps are suitable for liquid transfer in

- ! Washing systems
- ! Cooling and air-conditioning systems
- ! Water supply systems
- ! Water treatment systems
- ! Fire fighting systems
- ! Industrial plants
- ! Boiler feeding systems

Features

- ! High operating efficiency
- ! Precise parts for hygiene
- ! Good suction lift and operating pressure
- ! Service friendly
- ! Space saving
- ! Suitable for slightly aggressive liquids

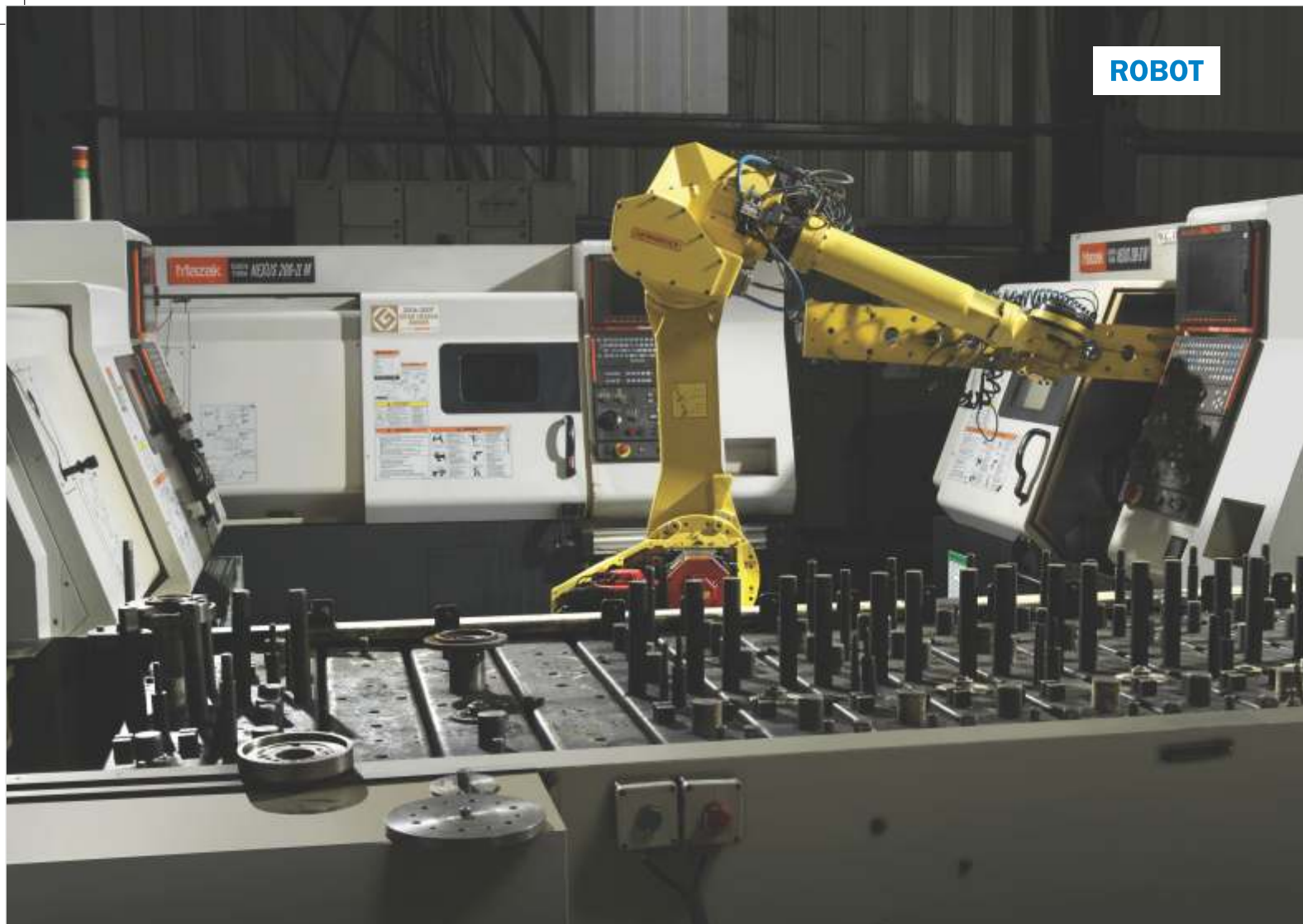
Specifications

Power range (kW)	: 0.37-75kW/0.5hp-100HP
Speed	: 2900rpm, 50Hz & 3450 rpm, 60 Hz
Versions	: 230V – 50Hz & 60Hz (Single Phase) A.C. Supply, incorporated with Thermal Overload
Protector	: 380/415V, 50Hz & 230 / 460V, 60Hz (Three Phase) incorporated with Thermal Overload
Protector	: 380/415V, 50Hz & 230/460V, 60Hz (Three Phase)
Type of Duty	: S1 (Continuous)
Degree of Protection	: IP 55
Class of Insulation	: F
Flow range upto	: 150M ³ hr/660 gpm
Head range upto	: 50 Hz-320m/ 60Hz-770m/ 885ft
Liquid Temp.	: -40°C to +180 °C /-104f to 356f
Operating Pressure	: Max. 30 bar/ 435PSI

SCR, SCRI, SCRN Series

Model No.	1S	1	3	5	10	15	20	32	45	64	90	120	150
Flow (M ³ h)	0.8	1	3	5	10	15	20	32	45	64	90	120	150
MAX HEAD(M)50Hz	209	223	243	243	224	238	250	273	322	225	206	209	198
Flow (GPM)	3.5	4.4	13.2	22.0	44.0	66.0	88.1	140.9	198.1	281.8	396.3	528.3	660.4
MAX HEAD(M)60Hz	228	237	239	237	250	243	213	270	258	178	168	189	161

Considering continuous product development the information/performance/specifications and illustrations disseminated in this catalogue are subject to change without notice.



ROBOT



STOCK AT FACTORY



CNC MACHINES AT PLANT



SUN IS THE NEW SHAKTI

